

## How to report sexual misconduct

### **GPC Public Safety 24 Hour Emergency**

678-891-3940

Off Campus Emergency Dial 911

### **GPC Human Resources**

(If misconduct involves a GPC employee)

678-891-2500

### **Student Health Center**

678-891-4105

#### **Limited Hours:**

Monday & Tuesday 7:30 a.m. – 6 p.m.

Wednesday & Thursday 7:30 a.m. – 4:00 p.m.

Friday 8:00 a.m. – 12 noon

### **Dean of Student Services**

Alpharetta: 678-240-6010

Clarkston: 678-891-3525

Decatur: 678-891-2718

Dunwoody: 770-274-5460

Newton: 770-278-1220

### **Personal Counseling Services**

Alpharetta: 770-274-5166

Clarkston: 678-891-3315

Decatur: 678-891-2346

Dunwoody: 770-274-5166

Newton: 770-278-1286

Access Line: 770-278-1300

### **Ethics & Compliance**

#### **Reporting Hotline**

877-516-3444

### **Sexual Assault Support Services**

24-hour toll free crisis hotline

888-747-7070

*Engaging in retaliatory acts against a person who reports an alleged sexual misconduct or testifies, assists or participates in a conduct proceeding or investigation is prohibited. The college will maintain confidentiality insofar as it does not interfere with the college's legal obligation or ability to investigate allegations of misconduct and take corrective action.*

## Prevention tips

- Be aware of your surroundings.
- Always let someone know where you are, especially if you're attending a meeting or event after hours.
- Contact Public Safety if you need to be escorted to your mode of transportation.
- Always walk briskly; look alert and confident, and avoid carrying objects requiring use of both arms.
- If you think you are being followed, walk quickly to areas where there are lights and people. If a car appears to be following you, turn and walk in the opposite direction, or walk on the other side of the street.
- Trust your instincts. If something doesn't feel right to you, leave and get to a safe place immediately.
- Carry a whistle. If in danger, use it, scream and run.
- Encourage group activities in early stages of a relationship.
- Know your sexual desires and limits, communicate them clearly.
- "No" means "No."

For more information on how to report sexual misconduct and the rights and responsibilities of alleged victims, go to [depts.gpc.edu/gpcmisconduct](https://depts.gpc.edu/gpcmisconduct).



# Don't be a Victim

REPORT SEXUAL MISCONDUCT

Sexual violence is an act of violence in which one person subjects another person to contact of a sexual nature against that person's will.

# GPC Sexual Misconduct Policy

Georgia Perimeter College strictly prohibits any acts of sexual misconduct (including sexual violence and/or harassment) to any member of the student body, faculty, staff, administration, or visitors to campus, whether they are guests, patrons or independent contractors.

Unwanted touching, unprovoked verbal or non-verbal gestures regarding sex, race, or ethnic origin, will not be tolerated and are subject to the student judicial system or employee disciplinary procedures.

Sexual misconduct is a criminal offense and can be adjudicated through the college, county court or both. In compliance with state law, GPC is required to report to external authorities any sexual misconduct incident involving children ages 17 and under.

## What is sexual misconduct?

Sexual misconduct/sexual violence, includes, but is not limited to: sexual harassment, sexual violence, non-consensual sexual intercourse, non-consensual sexual contact and sexual exploitation.

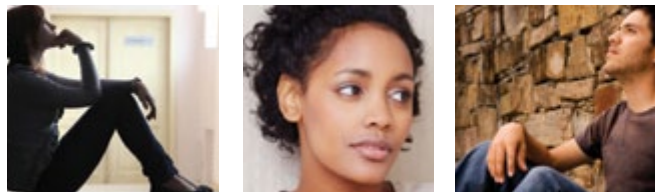
Examples of sexual misconduct are as follows:

- Rape
- Assault to commit rape
- Sexual battery
- Aggravated sexual battery
- Object rape
- Statutory rape
- Sodomy
- Aggravated sodomy
- Public indecency
- Unwanted touching and stalking

## Definitions

**Sexual violence** is an act of violence in which one person subjects another person to contact of a sexual nature against that person's will.

**Sexual harassment** is unwelcomed sexual advances, requests for sexual favors and other verbal or physical conduct of a sexual nature.



## Where can sexual misconduct occur?

- Sexual misconduct can occur face-to-face;
- It can occur online or through social media
- Or it can be relayed through phone calls, texts or instant messages.

## When can sexual misconduct occur?

Sexual misconduct can occur on or off campus and at student-sanctioned events like study abroad, homecoming, conferences, retreats and athletic events.

## Who can be a victim of sexual misconduct?

Anyone can be a victim of sexual misconduct, or sexual violence regardless of sexual orientation.

**Don't delay!** Seek medical attention if you have been a victim of sexual violence.

**Do not bathe, douche, or change clothes.** You may destroy legal evidence, regardless of whether you pursue legal action or not.

